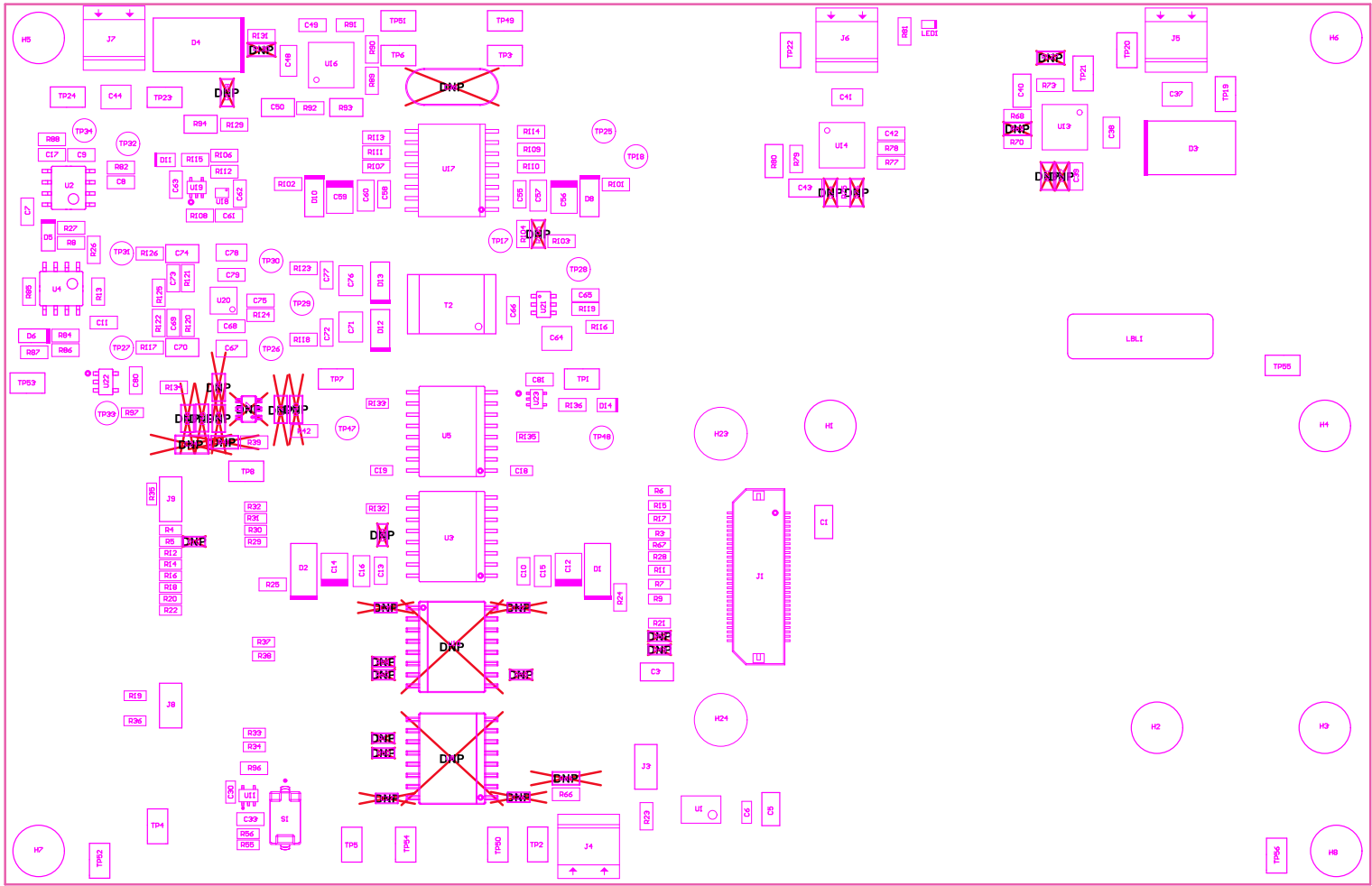


- Z21 ■ Install label in silkscreened box after final wash. Text shall be 8 pt font. Text shall be per the Label Table in the PDF schematic.
- Z22 ■ These assemblies are ESD sensitive, ESD precautions shall be observed.
- Z23 ■ These assemblies must be clean and free from flux and all contaminants. Use of no clean flux is not acceptable.
- Z24 ■ These assemblies must comply with workmanship standards IPC-A-610 Class 2, unless otherwise specified.

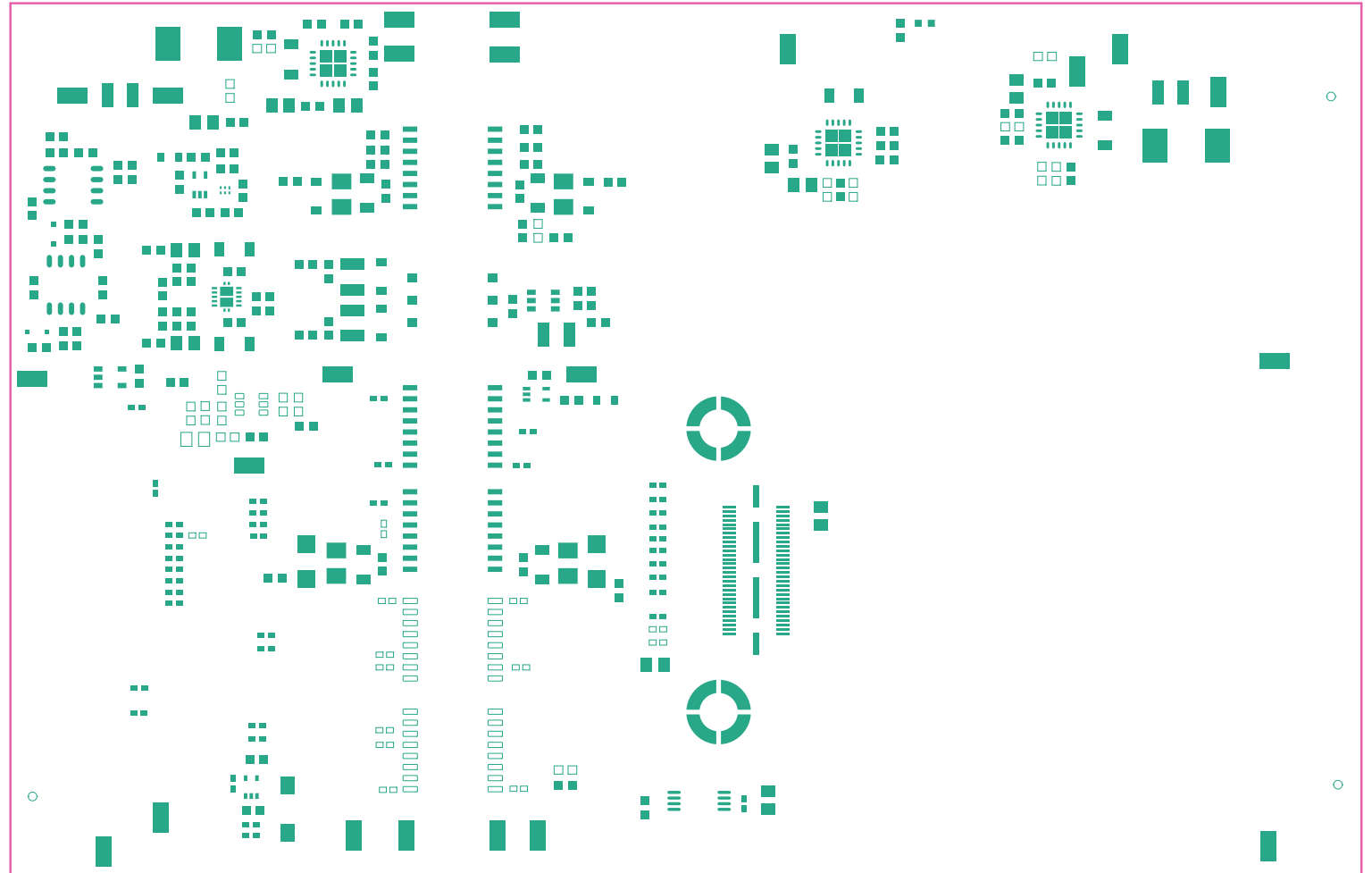


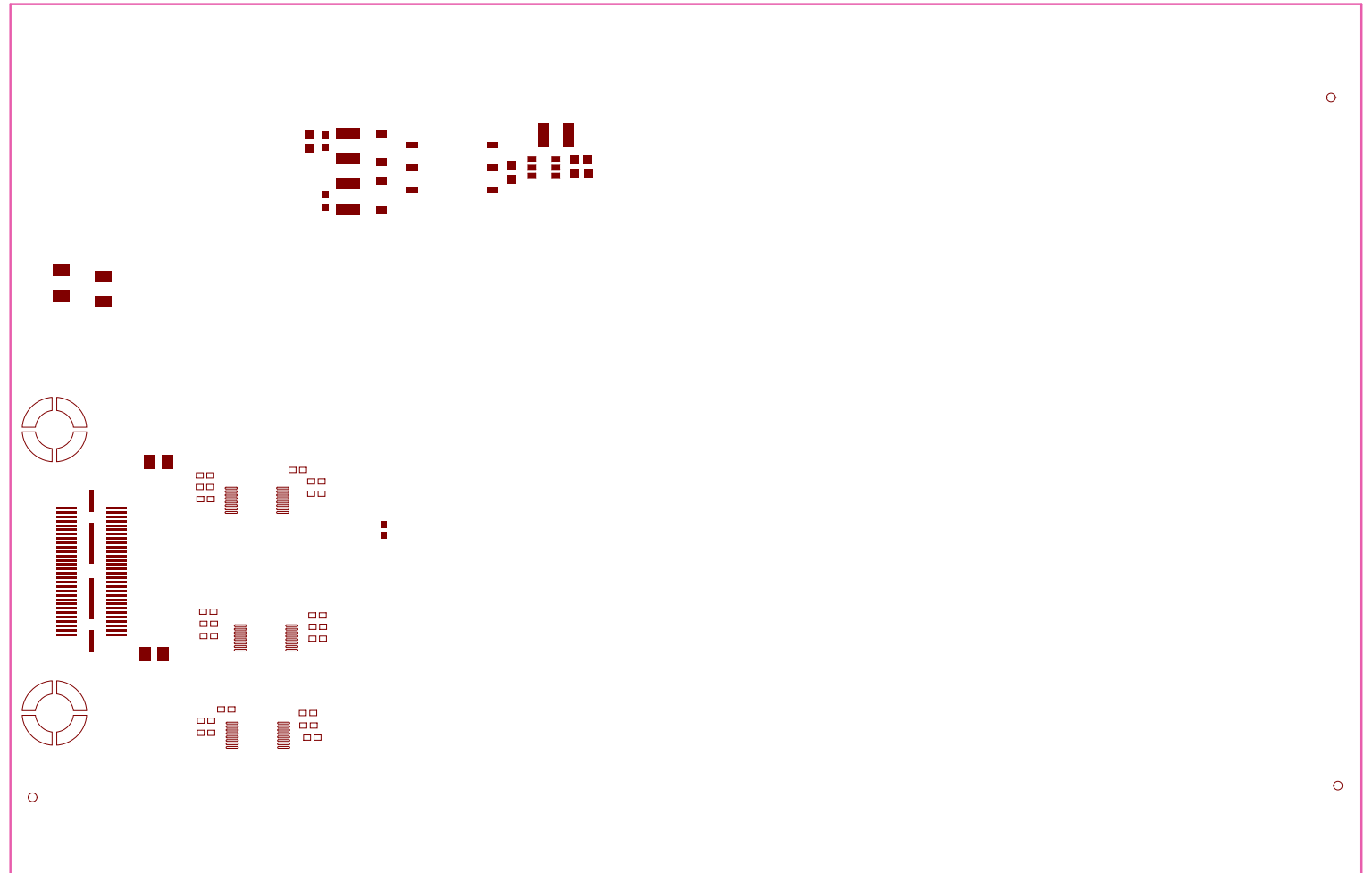
COMPONENTS MARKED 'DNP' SHOULD NOT BE POPULATED.

ASSEMBLY VARIANT:

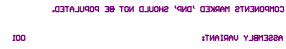
001

PCB VIEWED FROM TOP SIDE	BOMID #: TID0-01576_0086865_160_Interface	REV# E1	SUN REV# Not In VersionControl
LAYER NAME = H5 Assembly Top	TID #: 01576		
PLOT NAME = Top LayerAssembly Drafting	GENERATED 4/6/2020	3x5x10 PH	TEXAS INSTRUMENTS





Bottom Paste

[illegible]